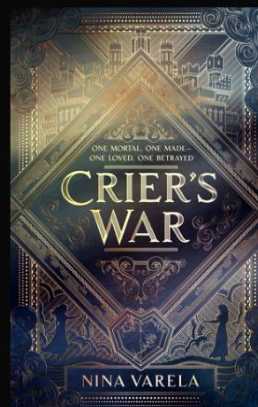
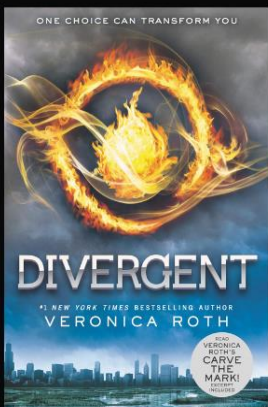
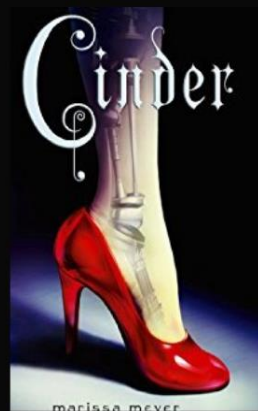
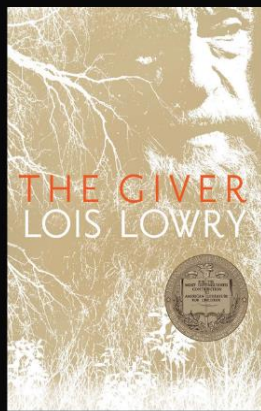
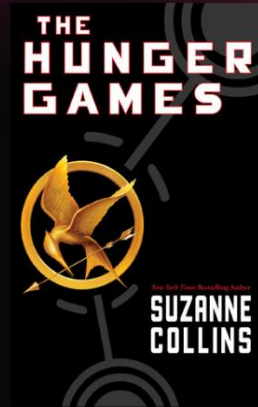
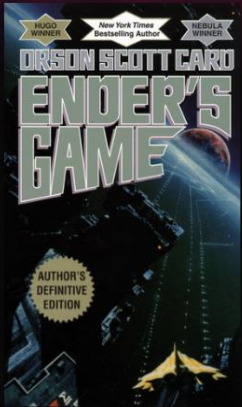


SCIENCE FICTION



POPULAR IN SCIENCE FICTION





THE INFINITY COURTS

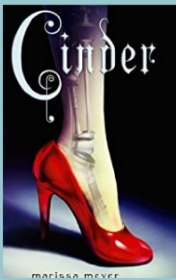
BOWMAN, AKEMI DAWN

Sub-Genres: Fantasy, Romance, Contemporary

Moods: Adventurous, mysterious, tense, dark

Pace: Medium/Fast

Lexile: 740L



CINDER

MARISSA MEYER

Sub-Genres: Fantasy, Romance, Retellings

Moods: Adventurous, mysterious, emotional, funny

Pace: Medium/Fast

Lexile: 790L



GEARBREAKERS

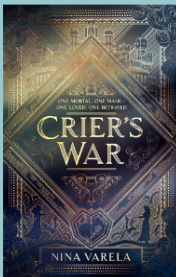
MIKUTA, ZOE HANA

Sub-Genres: LGBTQ+, fantasy, romance

Moods: Adventurous, emotional, tense, dark

Pace: Medium/Fast

Lexile: 830L



CRIER'S WAR

VARELA, NINA

Sub-Genres: Fantasy, LGBTQ+, romance

Moods: Adventurous, emotional, mysterious, tense

Pace: Medium/Fast

Lexile: N/A



IRON WIDOW

ZHAO, XIRAN

Sub-Genres: LGBTQ+, fantasy, romance, historical

Moods: Adventurous, dark, tense, emotional

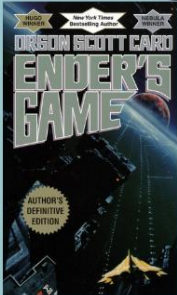
Pace: Fast/Medium

Lexile: 830L





GAMING



ENDER'S GAME

CARD, ORSON SCOTT

Sub-Genres: Fantasy, classics, war, adventure, New Adult

Moods: Adventurous, dark, tense, emotional

Pace: Fast/Medium

Lexile: 780L



READY PLAYER ONE

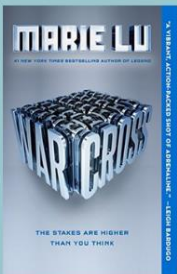
CLINE, ERNEST

Sub-Genres: Fantasy, cyberpunk, adventure, New Adult

Moods: Adventurous, funny, tense, lighthearted

Pace: Fast/Medium

Lexile: 990L



WARCROSS

LU, MARIE

Sub-Genres: Dystopia, romance, mystery, adventure

Moods: Adventurous, mysterious, tense, emotional

Pace: Fast/Medium

Lexile: 810L



SLAY

MORRIS, BRITTNEY

Sub-Genres: Contemporary

Moods: Emotional, inspiring, adventurous, hopeful

Pace: Medium/Fast

Lexile: 930L

Contemporary Sci-Fi



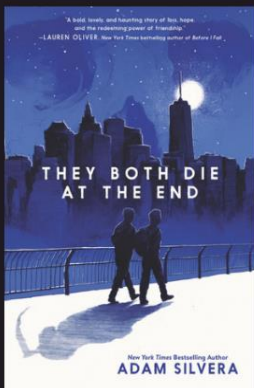
FORGET THIS EVER HAPPENED CLARKE, CASSANDRA ROSE

Sub-Genres: LGBTQ+, historical fiction, horror, mystery
Moods: Mysterious, adventurous, tense, dark
Pace: Medium/Fast
Lexile: N/A



EARLY DEPARTURES REYNOLDS, JUSTIN A.

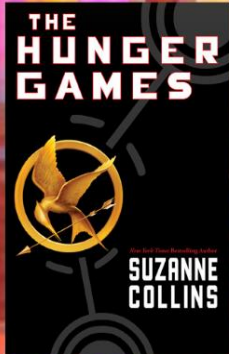
Sub-Genres: fantasy, magic realism, romance
Moods: Emotional, reflective, sad, funny
Pace: Fast/Medium
Lexile: N/A



THEY BOTH DIE AT THE END SILVERA, ADAM

Sub-Genres: LGBTQ+, romance, fantasy
Moods: Emotional, sad, reflective, adventurous
Pace: Medium/Fast
Lexile: 870L

DYSTOPIA



THE HUNGER GAMES

COLLINS, SUZANNE

Sub-Genres: Fantasy, romance, adventure
Moods: Adventurous, tense, dark, emotional
Pace: Fast/Medium
Lexile: 820L



THE MAZE RUNNER

DASHNER, JAMES

Sub-Genres: Fantasy, adventure, mystery
Moods: Adventurous, mysterious, tense, dark
Pace: Medium/Fast
Lexile: 770L



THE MARROW THIEVES

DIMALINE, CHERIE

Sub-Genres: Fantasy, LGBTQ+, speculative fiction
Moods: Emotional, dark, adventurous, sad
Pace: Medium/Fast
Lexile: 810L



THE ONE'S WE'RE MEANT TO FIND

HE, JOAN

Sub-Genres: Fantasy, mystery, thriller
Moods: Mysterious, emotional, adventurous, reflective
Pace: Medium/Slow
Lexile: 690L

DYSTOPIA



SURVIVE THE DOME

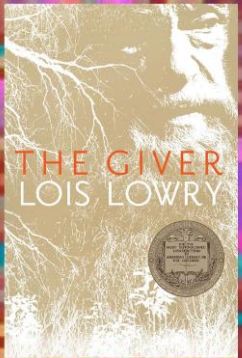
JACKSON, KOSOKO

Sub-Genres: LGBTQ+, fantasy, speculative fiction

Moods: Dark, tense, adventurous, challenging

Pace: Fast/Medium

Lexile: N/A



THE GIVER

LOWRY, LOIS

Sub-Genres: Classics, fantasy

Moods: Reflective, emotional, mysterious, adventurous

Pace: Medium/Fast

Lexile: 760L



WE SET THE DARK ON FIRE

MEJIA, KAY

Sub-Genres: Fantasy, LGBTQ+, romance

Moods: Adventurous, tense, emotional, mysterious

Pace: Medium/Fast

Lexile: 840L



SANCTUARY

MENDOZA, PAOLA

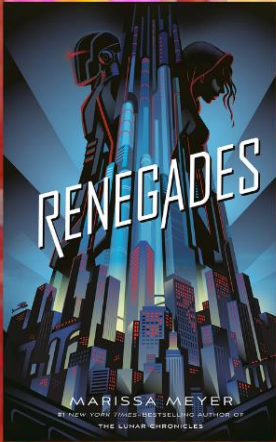
Sub-Genres: Contemporary, adventure, survival

Moods: Emotional, tense, dark, sad

Pace: Fast/Medium

Lexile: 650L

DYSTOPIA



RENEGADES

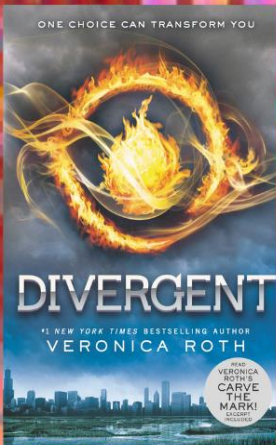
MEYER, MARISSA

Sub-Genres: Fantasy, romance, adventure

Moods: Adventurous, mysterious, tense, funny

Pace: Medium/Fast

Lexile: 860L



DIVERGENT

ROTH, VERONICA

Sub-Genres: Fantasy, romance, adventure, action

Moods: Adventurous, tense, emotional, mysterious

Pace: Fast/Medium

Lexile: 700L



SCYTHE

SHUSTERMAN, NEAL

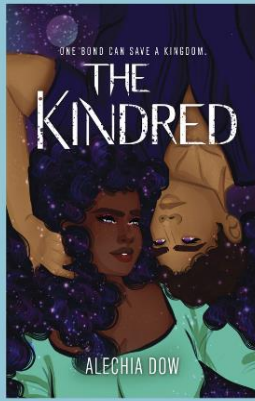
Sub-Genres: Fantasy, romance

Moods: Adventurous, dark, tense, mysterious

Pace: Medium/Fast

Lexile: 830L

Space, Aliens, and Planets Beyond



THE KINDRED DOW, ALECHIA

Sub-Genres: Romance, fantasy, LGBTQ+
Moods: Adventurous, emotional, hopeful
Pace: Medium/Fast
Lexile: N/A



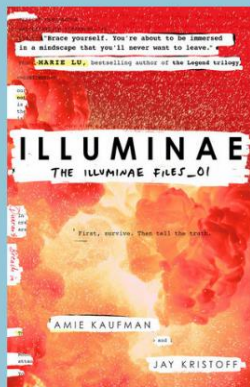
SIA MARTINEZ AND THE MOONLIT BEGINNING OF EVERYTHING

GILLILAND, RAQUEL VASQUEZ
Sub-Genres: Contemporary, fantasy, magic realism
Moods: Adventurous, emotional, mysterious,
hopeful
Pace: Medium/Fast
Lexile: 570L



A COMPLICATED LOVE STORY SET IN SPACE

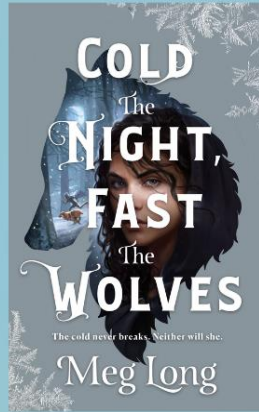
HUTCHINSON, SHAUN DAVID
Sub-Genres: LGBTQ+, Romance, Mystery
Moods: Adventurous, mysterious, funny, emotional
Pace: Medium/Fast
Lexile: 710L



ILLUMINAE KAUFMAN, AMIE

Sub-Genres: Romance, fantasy, thriller, adventure
Moods: Adventurous, tense, emotional, mysterious
Pace: Fast/Medium
Lexile: 780L

Space,
Aliens,
and
Planets
Beyond



**COLD THE NIGHT, FAST
THE WOLVES**

LONG, MEG

Sub-Genres: Fantasy, adventure, survival

Moods: Adventurous, tense, emotional, dark

Pace: Medium/Fast

Lexile: N/A



**THE DARKNESS OUTSIDE
US**

SCHREFER, ELIOT

Sub-Genres: LGBTQ+, romance, fantasy,
mystery

Moods: Mysterious, emotional, adventurous,
dark

Pace: Medium/Fast

Lexile: N/A

TIME Travel



THE ELECTRIC KINGDOM

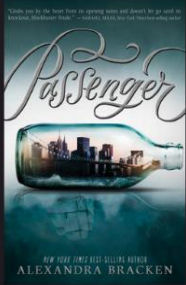
ARNOLD, DAVID

Sub-Genres: Fantasy, apocalyptic, speculative fiction

Moods: Adventurous, mysterious, emotional, dark

Pace: Medium/Slow

Lexile: 850L



PASSENGER

BRACKEN, ALEXANDRA

Sub-Genres: Historical fiction, romance, fantasy, adventure

Moods: Adventurous, mysterious, emotional, tense

Pace: Medium/Slow

Lexile: 870L



THE UPPER WORLD

FADUGBA, FEMI

Sub-Genres: Fantasy, thriller, adventure

Moods: Adventurous, mysterious, tense, informative

Pace: Medium/Fast

Lexile: N/A



DISPLACEMENT (GRAPHIC NOVEL)

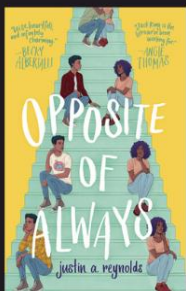
HUGHES, KIKU

Sub-Genres: Historical fiction, sequential art

Moods: Informative, emotional, reflective, sad

Pace: Fast/Medium

Lexile: N/A



OPPOSITE OF ALWAYS

REYNOLDS, JASON A.

Sub-Genres: Romance, fantasy, magic realism

Moods: Emotional, funny, hopeful, lighthearted

Pace: Medium/Fast

Lexile: 630L

